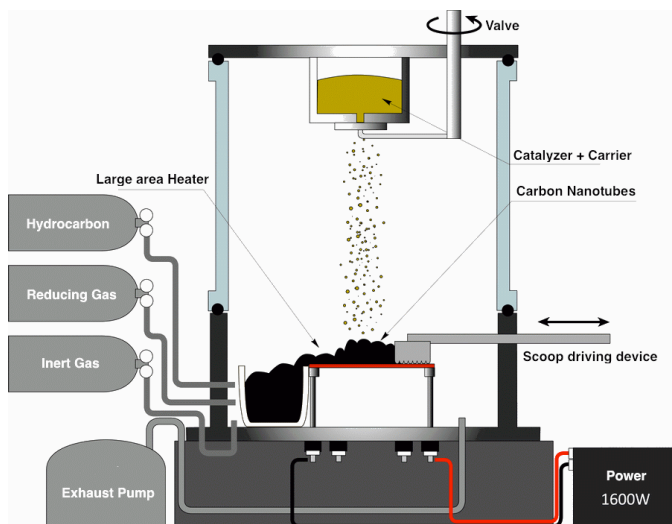


## Aligned CNTs array Synthesizer—Professional Model



- Large heating area, continuous catalyzer import and recycling of CNTs. This device is committed to continuous mass production of CNTs powders. The device is simple and convenient and can produce 10-50g CNTs per day and prepare super-long CNTs of high crystallizability.
- Able to produce the CNTs which is directly dispersed in polymer/compound materials. Mix around grains or powders of polymers/compound materials with catalyzer (or its precursor) and make them disperse evenly. Then, CNTs will be created on the surface of grains or between powders and thereby, the compound material with well dispersed CNTs directly prepared. The excellent proportion and dispersion of CNTs in compound material cannot be achieved by other methods.



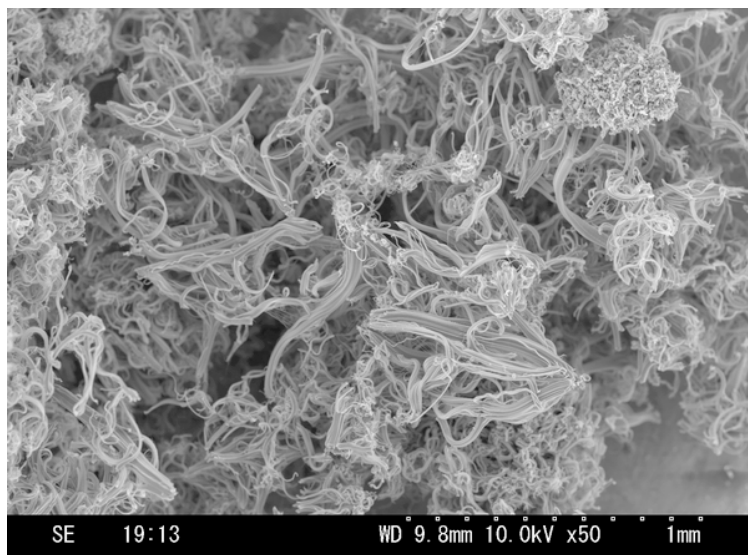
- Catalyzer is continuously imported into plate-shaped heater from upper container and CNTs is created.
- CNTs is pushed toward recycling container by scoop driving device.
- Continuous production. Mass production of CNTs is embodied on mini equipment.

**NaBond Technologies Co., Limited**

Head office: 1001, Fourseas building, Nathan Rd, KL, HONG KONG  
Shenzhen office: 402-406, No. 13rd Bldg, Zhongxing Industrial Park,  
Chuangye Rd, Nanshan, Shenzhen, China, 518054

<http://www.nabond.com>

Email: [info@nabond.com](mailto:info@nabond.com)  
Tel: +86-755-89801091  
Fax: +86-755-86058970



As-produced super-long CNTs  
 Length: 500 $\mu$ m~1mm  
 Diameter: 10nm

Basic Technical Parameters	
Mainframe	<ul style="list-style-type: none"> <li>- Heat-resistant organic glass housing</li> <li>- Purified gas import tube</li> <li>- Reducing gas import band</li> <li>- Hydrocarbon gas import pipe</li> <li>- Exhaust pump pipe</li> <li>- Output transmission pipe</li> <li>- Vacuum meter</li> <li>- Current import terminal</li> </ul>
Large heater	<ul style="list-style-type: none"> <li>- 60mm×80mm</li> <li>- Working temperature 400~800°C</li> </ul>
Power supply of heater	<ul style="list-style-type: none"> <li>- Rating output power: 1600W AC90-250</li> <li>- Single-phase 50-60Hz</li> <li>- Dimension: W430mm×H130mm×D405mm</li> </ul>
Exhaust Pump	<ul style="list-style-type: none"> <li>- Rotary pump</li> </ul>
Catalyzer supplying and carrier device	
Recycling device	
Radiation temperature meter	

Made in Tsukuba Japan