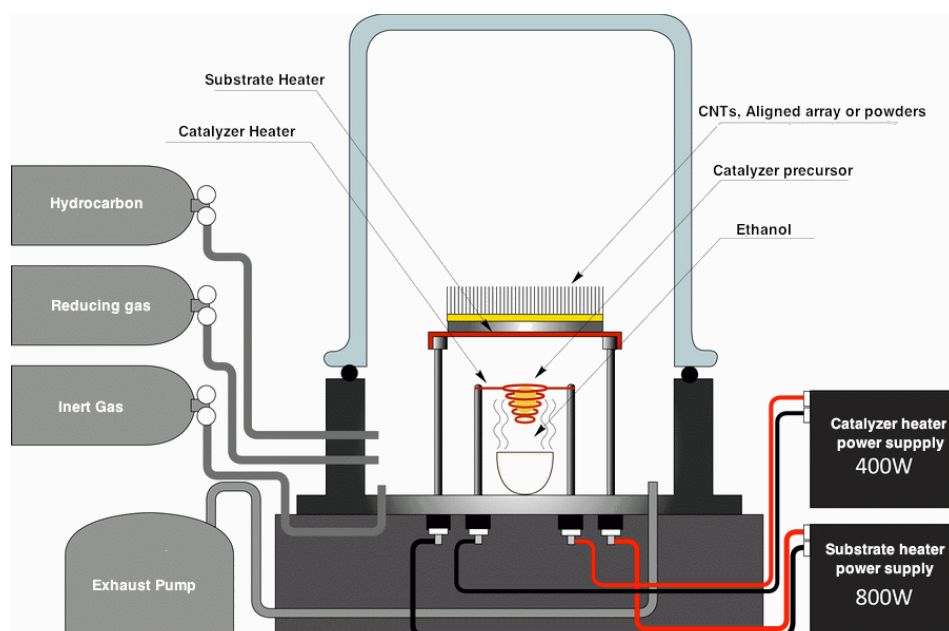


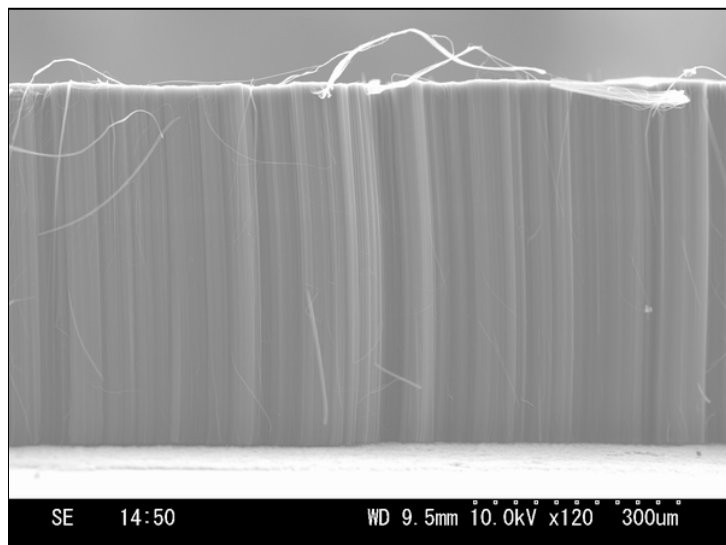
Aligned CNTs Array Synthesizer—Standard Model



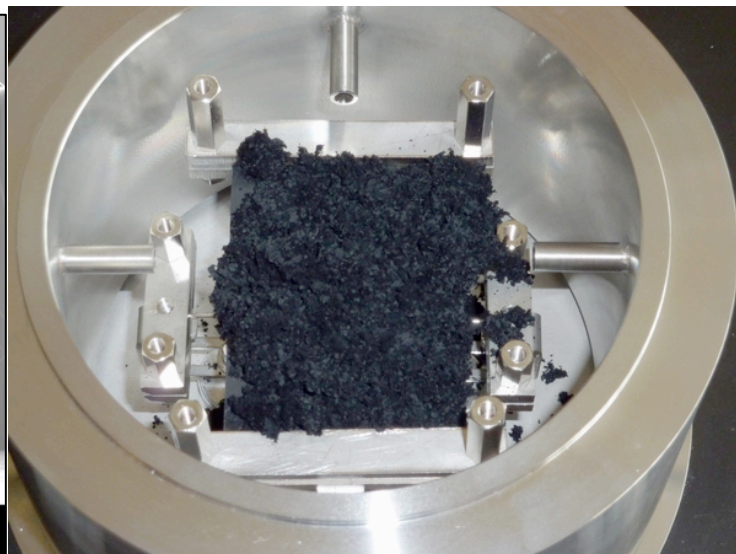
- This equipment is the upgrade version of basic model with additional fine-wire heating device and import setting of various gases. Besides organic liquid materials, there are also import inlets for hydrocarbon material gases, like ethane, methane. It can produce various CNTs, carbon nano-coil, micro coil and so on.
- With additional fine-wire heating device for catalyst precursor which is heated and sublimed at advance, and deposits on substrate or carriers (Si, quartz, ceramics, etc). In principle, separated preparation of catalyzers is not necessary. That means formation of catalyzer and creation of CNTs is embodied at the same time in the same device and full process of CNTs synthesis is automatically completed. This device is not only applicable to array/aligned CNTs, but also to powder CNTs.
- The metal-wire of this equipment can promote the growth of CNTs and make the growth of super-long CNTs easier.



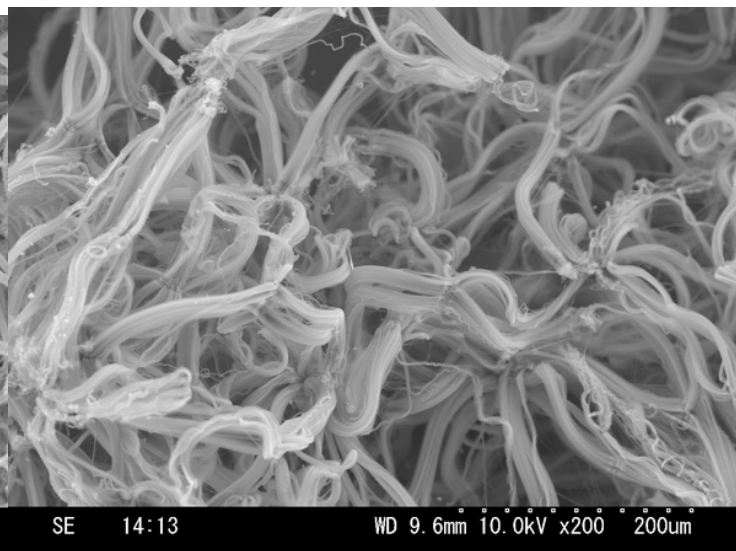
In ethanol or hydrocarbon, if we heat catalyzer precursor and make it sublime while heating substrate or catalyzer carrier, CNTs will be created while material and current exchange happens on the surface of substrate or carriers.



SEM of Section of Super-Long CNTs array (about 500 μ m long) Film on Substrate



CNTs Powders created from powder carriers



Carbon Nano-Coil made by ethyne and hydrogen SEM of CNTs Powders Created by Powder Carriers

Basic Technical Parameters	
Mainframe	<ul style="list-style-type: none">- Heat-resistant organic glass housing- purified gas import tube- Exhaust pump pipe- Output transmission pipe- Vacuum meter- Current import terminal
Multiple Plugs	<ul style="list-style-type: none">- Gas import tube 3pcs
Substrate heater	40mm×60mm Working temp. 400~800°C
Substrate heater power supply	Rating output power: 800W AC90-250 single-phase 50-60Hz External dimension: W213mm×H130mm×D405mm
Catalyzer heater	Heating wire
Catalyzer heater power supply	Rating output power: 400W AC90-250 Single-phase 50-60Hz External dimension: W110mm×H130mm×D405mm
Exhaust Pump	<ul style="list-style-type: none">- Rotary pump
Options	<ul style="list-style-type: none">- Radiation temperature meter