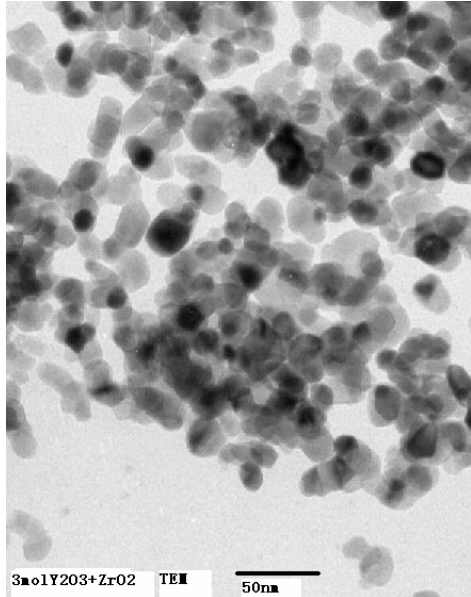


1、YSZ(3mol%Y2O3)



Typical Properties:

Y2O3=5.4wt%

ZrO2+HfO2=94.0% min

APS=25nm

SSA=40m2/g

Morphology=spherical

Cryst. Phase=mon+tetr

2、 nano 5%mol Y2O3 stabilized ZrO2:

Specifications:

Y2O3: 8.6 to 9.0wt%; single phase

Fe2O3: 0.01%max; SiO2:0.01%max; Na2O:0.01%max;

MeanSize: 20 to 30nm